

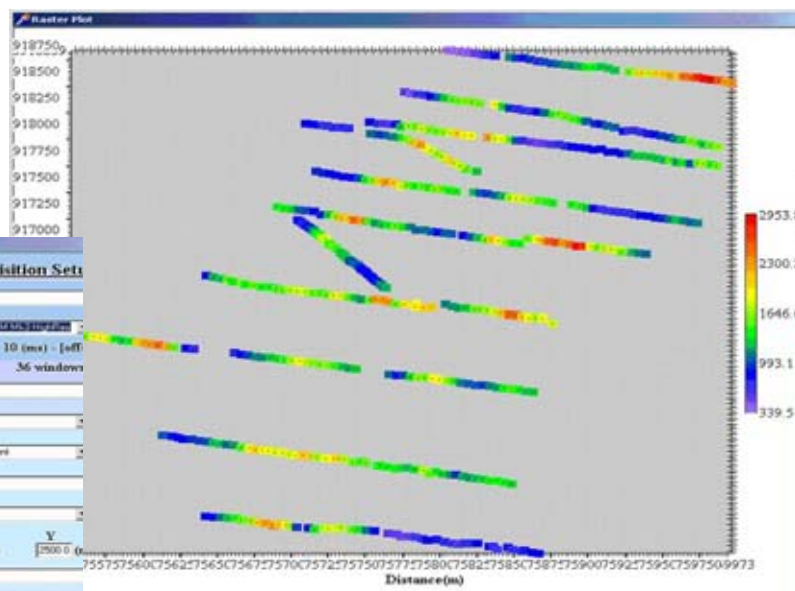
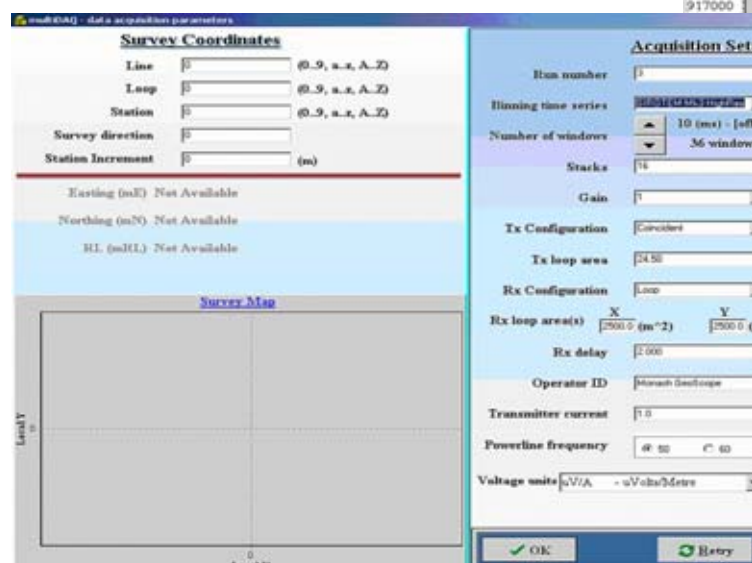
terraTEM Features

- Combined transmitter and receiver in one unit
- Single or 3 channel receiver with 10 amp. transmitter
- Fast and easy data transfer via USB port
- Easy to use touch screen with auto set-up and smart menus
- Large 15" LCD display for high data visualisation
- High speed sampling at 500 kHz for superior near surface resolution
- Integrated 12 channel GPS system for seamless station positioning (option)
- Integrated PC for data processing and interpretation
- Data visualisation and processing in the field using built-in software
- Rugged construction with external 24 v battery power pack and charger
- Compact portable unit in splash-proof briefcase
- Designed and built in Australia



Screen Dumps

The following are a number of screen dumps from the *terraTEM* system.



Multiple display formats, including gridding and raster images (options)

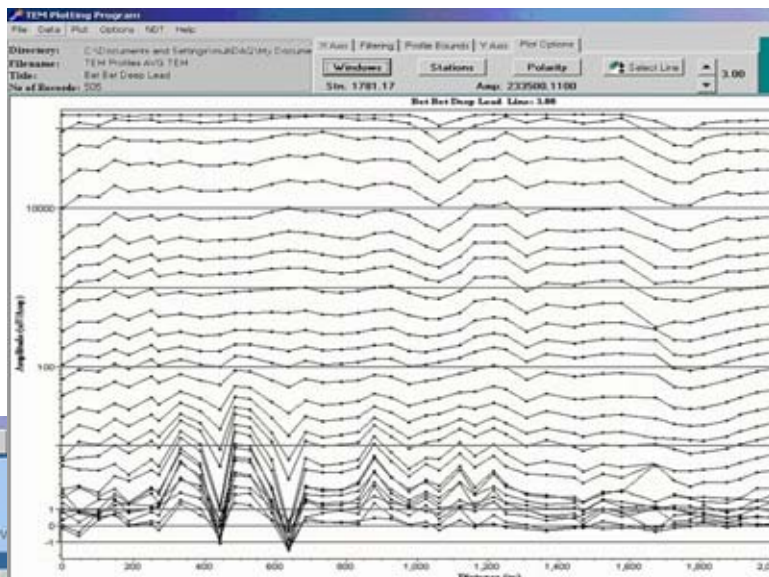
Easy access to all parameters, multiple binning and stacking options; smart menu system.

The *terraTEM* is designed, developed and manufactured by **Monash GeoScope**

Applications

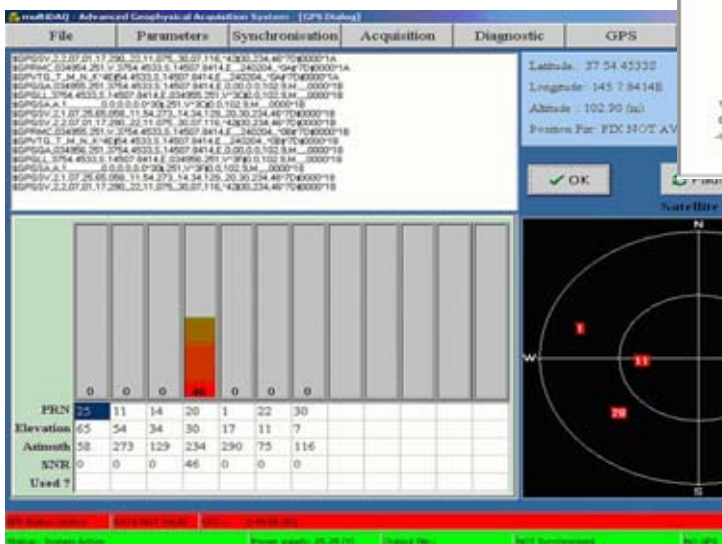
The **terraTEM** can be used for various applications including the following:

- Mineral exploration
- Near surface including geo-technical and engineering investigations
- Groundwater and salinity studies
- Environmental surveys



Full control of all aspects of data display, post-survey filtering, and decay curve analysis

Internal GPS, for positional accuracy (option)



General Specifications

| | terraTEM | Options |
|---|----------------------------|----------------------------------|
| Transmitter Output | 10 Amps (max.) | Enhanced Transmitter |
| Receivers | 1 Channel | 3 Channels (simultaneous) |
| High Resolution Sampling Rates | 500 kHz | - |
| User Selectable Multiple Time Gates | - | Option |
| Data Visualisation and Processing in field | Standard Software | Enhanced Software |
| Storage Device – 1 GB Flash Disk | Standard | - |
| GPS Receiver – 12 channel | - | Option |
| Communications – USB Port for Data Transfer | Standard | - |
| External Synchronisation | - | Option |
| Continuous Recording (with external GPS Interface) | - | Option |
| Stacking Options and Gain Functions | - | Option |
| Vectem 3 Interface Module (for down-hole surveying) | - | Option |
| Interface Options (third party devices) | - | Option |
| Dimensions: Console: | 500 x 360 x 165 mm. 10 kg. | |
| Battery Box: | 280 x 250 x 180 mm. 11 kg. | |
| Operating Temperature: | 0 to 45 degrees C. | |

Further Information

For further information regarding this product, either technical or sales, please contact:

| | |
|---|--------------------------|
|  <p>Suite 1, 23 Gray Street, Sutherland. N.S.W. 2232 Australia Phone +61 (0) 2 9542 5266 Fax +61 (0) 2 9542 5263 e-mail info@alpha-geo.com website www.alpha-geo.com</p> | <p>Your Distributor:</p> |
|---|--------------------------|

terraTEM

Technical Specifications

Transmitter

| | |
|---------------|--|
| Output | 10 Amp (max.) |
| On/Off Period | Adjustable 10 ms (50 Hz) or 8.33 ms (60 Hz) increments |

Receiver

| | |
|--------------------|--|
| Sampling | 500 kHz per channel, fixed |
| Analogue inputs | +/- 10 V input range, over-voltage protected (clamped), +/- 30 V max. continuous input voltage. |
| Gain | 1, 2, 4, 8, 100, 200, 400, 800 and Auto (software selectable) |
| Dynamic Range | 156dB (effective) |
| Resolution | Maximum 25 bits |
| Functions Measured | Tx/Rx loop resistance, Tx current, Tx turn-off time, battery voltage, automatic gain/offset calibration. |

Console

| | |
|--------------|------------------|
| Display | LCD TFT, 15 inch |
| Touch Screen | Splashproof |
| Storage | 1 GB flash disk |

External Interfaces

| | |
|----------------|----------------------------|
| Communications | USB port for data transfer |
|----------------|----------------------------|

Sensor Attachments Available

| | |
|------------------|------------------------|
| Surface Receiver | RVR-1 or cable loop |
| Downhole | Vectem 3 or equivalent |

Equipment Supplied

- Console
- Loop connector
- Battery box (24 volts), complete with connector cable
- Battery charger
- USB flash disk 128 MB (for data transfer)
- Operations manual

Physical

| | |
|-----------------|-----------------------|
| Housing | Aluminium "Zero" case |
| Console: Weight | 10 kgs. |
| Dimensions | 500 x 360 x 165 mm. |
| Battery Weight | 11 kgs. |
| Box: Dimensions | 280 x 250 x 180 mm. |
| Op. Temperature | 0 to 45 degrees C. |

Options

| | |
|--------------------------------|--|
| GPS Receiver | 12 channel receiver |
| Enhanced Transmitter | Variable loop currents and faster turn-off times |
| Multi-channel Receiver | 3 channel simultaneous A/D |
| External Transmitter Interface | External synchronisation option (for use with SATX, Zonge high powered transmitters) |
| Vectem 3 Interface | Internal interface module |
| Upgrade Display & Touch Screen | Upgrade to Hibrite screen with tough IR touch screen |
| Continuous Recording | Continuous recording of unit with external GPS interface using NMEA standard |
| Software Packages | Stacking Options and Spherics Rejection Spectral Analysis and Digital Processing |

Further Information

For further information regarding this product, either technical or sales, please contact:

| | |
|---|--------------------------|
|  <p>Suite 1, 23 Gray Street, Sutherland. N.S.W. 2232 Australia Phone +61 (0) 2 9542 5266 Fax +61 (0) 2 9542 5263 e-mail info@alpha-geo.com website www.alpha-geo.com</p> | <p>Your Distributor:</p> |
|---|--------------------------|