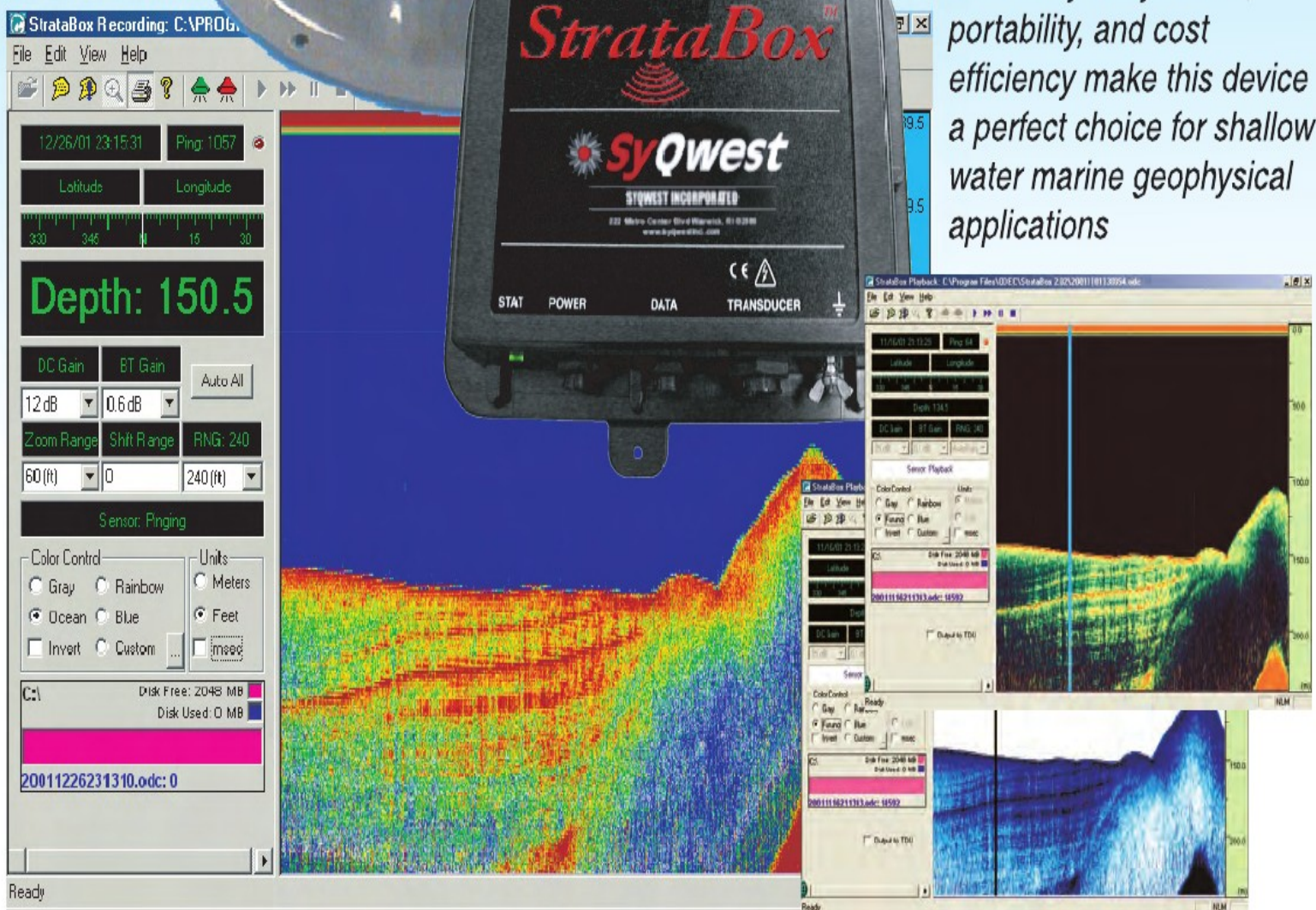


Marine Geophysical Instrument

The **StrataBox™** is a portable high-resolution marine sediment imaging instrument capable of delivering 6cm of marine sediment strata resolution with bottom penetration of up to 40 meters. It is designed exclusively for inshore and coastal geophysical marine survey up to 150 meters of water depth.

The sensor unit is extremely compact, interfaces directly to a standard laptop PC and comes complete with a light-weight and efficient acoustic transducer and Windows® PC software.

Extremely easy to use, portability, and cost efficiency make this device a perfect choice for shallow water marine geophysical applications



- ◆ Geographic Position Input; NMEA Compatible ◆ Depth Accuracy +/- 0.5%
- ◆ Strata Resolution: 6 cm with up to 40 meters bottom penetration
- ◆ Data Storage & Playback ◆ Zoom Modes ◆ Event Marks ◆ Sound Velocity
- ◆ Draft ◆ Low Input Power (8 watts) ◆ SEG-Y Output
- ◆ 10Khz standard, 3.5Khz and Deep Water options available

StrataBox™

SPECIFICATIONS

Units:	Feet or Meters
Depth Ranges:	0-15, 0-30, 0-60, 0-120, 0-240, 0-450 Feet. 0-5, 0-10, 0-20, 0-40, 0-80, 0-150 Meters. Auto-ranging Modes in all units.
Draft Offset:	0 to 30 feet (10 meters)
Manual Gates:	Shallow & Deep, (0.1 ft / 0.1mt resolution)
Shift Range:	1 foot (1meter) increments to bottom of selected range
Zoom Range:	15, 30, 60, 120, 240 feet 5, 10, 20, 40, 80 meters
Zoom Modes:	Bottom Zoom, Bottom Lock, Marker Zoom, GUI Zoom (Playback Only)
Display:	Normal Data, Zoom Data, Navigation, Depth, Command/Status Color Control for Data: 4 selections or Custom (User Input), Data Invert possible.
Sound Velocity:	4600 - 5250 ft/sec (1400 - 1600 mt/sec)
Depth Resolution:	0.1 feet (0.1 meters)
Depth Accuracy:	+/-0.5% of depth 1 ft/sec (1 mt/sec) increment
Navigation Input:	NMEA 0183, GLL, GGA, RMC, VTG, VHW, HDT. Selectable Baud Rate, RS-232 .
Data Output:	NMEA 0183; DPT, DBT, PMC; ODEC
StrataBox I/F:	Serial data, 57.6Kbaud, RS-422
Printer Output:	(Parallel Port) interface to Thermal Printers; screen dumps to any Windows printer
Shallow Water Operation:	<2.5 meters; bottom type dependent
Transmit Rate:	Up to 10 Hz, depth and operator mode dependent.
Event Marks:	Manual, Periodic, External (user selectable)
Data File Storage:	Saves Depth, Navigation, and Graphic Data in SEG-Y and ODEC (Proprietary) format . Normal Data and Zoom Data stored is Pixel Data and can be played back and printed.
Data File Playback:	Files played back and printed at Normal, Rapid Advance ,or Scroll Bar, with Pause and GUI Zoom
Frequency Output:	10 Khz (standard) 3.5Khz (*optional)
Transmit Output	300 Watts (pulsed), 1000 Watts capable
Power:	
Input Power:	10-30 Volts DC, Nominal Power 8 watts, Reverse Polarity and Over Voltage Protected.
Dimensions:	25.4 cm (10") Length, 15.876 cm (6.25") Width, and 6.25 cm (2.5") Height. (sensor unit only)
Weight:	0.9 kg (2.0 lbs). (sensor unit only)

Options:

- ❖ Over The Side Mount Kit
- ❖ 3.5Khz Operation
- ❖ 3.5Khz Transducers
- ❖ Deep Water transducer
- ❖ TDU-850 Thermal Printer
- ❖ TDU-1200 Thermal Printer
- ❖ SonarWeb Pro

